



Kate and Tim Lee

Link Letter no. 24 | November 2022

Contact details:
timkatelee@yahoo.com



Location: Philippines



What we do: Improving the lives of families living in poverty in the Philippines by supporting Jigsaw Kids to become a sustainable organisation

Dear all,

Hi everyone and welcome to our October link letter. There is so much good news of Jesus to share from the work of Jigsaw and our own lives despite so many difficulties in our world today. Luke 4:18 has been such a strength and guide for Jigsaw this month.

Jesus read from Isaiah, “The spirit of the Lord is on me, because he has anointed me to proclaim good news to the poor. He has sent me to proclaim freedom for the prisoners and recovery of sight for the blind, to set the oppressed free, to proclaim the year of the Lord’s favour.”

As a family and Jigsaw ministry, we want to say a huge thank you for being part of this mission, enabling us through prayer, gifts, and love to share God’s love with so many children and families in Jigsaw. Thank you.

Family update

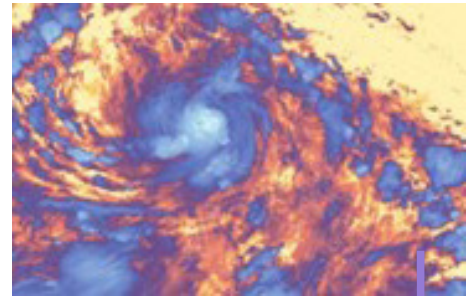
We thank God for continued prayers answered and goodness. Grace has started sixth form and is really enjoying it, making good friends and has just come back from a three-day geography field trip to the northeast (can hardly believe I am writing this). Rebekah is in Germany ready to start her master’s degree, James is in Norwich in his second year of uni, Tim is loving the time and space he now has for Jigsaw, I (Kate) am very much enjoying my reception class, and we are loving our home so much. God is so very good, and we thank you for your life changing prayers for our family and God’s great love for us and his great blessings.

Jigsaw update

According to UNICEF, the number of children and families in extreme poverty in the Philippines has risen by over 200 percent in the last 2.5 years. Despite so many problems and so much suffering, we see God’s great love and compassion reaching out, comforting, sustaining, and building up lives through the ministry of Jigsaw. Thank you Father God.

Super Typhoon Noru

At the end of September, Super Typhoon Noru hit the Philippines, causing huge damage and loss of life. It hit some hundred miles north of Manila, but it was still felt in the Jigsaw communities. The most at-risk people in Jigsaw live by the river edge. Concerned about the rising water, Jigsaw managed to evacuate over 30 households in Area 4 into Jigsaw’s literacy centre and offices. Pastor Jolly wrote the next day, “Praise the Lord the typhoon has passed without loss of life in Jigsaw.” After much clearing up and help, people were helped to return home. For many north of Manila, however, things were much worse and we hold them in our hearts and prayers.



Typhoon

Support Kate and Tim Lee:
churchmissionsociety.org/kateandtimlee

**With Jesus
With each other
To the edges**



Tim's trip to the Philippines postponed, but work goes on :)

Tim was very excited for his trip to the Philippines at the end of September but unfortunately due to the death of his aunt, of whom he is next of kin, the trip has had to be postponed till January.

It was stressful but putting the situation into God's hands, we are all at peace and all the work Tim was going to do with the Jigsaw team on his visit is currently going ahead very successfully (albeit very early in the morning!) via Zoom. Praise God.

Jigsaw visiting month a huge blessing

In October, Jigsaw funds were slightly down and we felt God guiding us to put on a Jigsaw visiting month.

Wow! What blessings for Jigsaw staff, children and families for the TIME to sit and share together with hundreds of families, children, young people in the squatter areas, slums and street communities where Jigsaw works. The staff met smiles, hugs, tears of joy, thanks, and built up such precious relationships, talking and sharing about Jesus as they went. It was also a vital time to share in people's pain, struggles, bereavements, illness, desperation, abuses, fears, worries, pain and suffering. Jigsaw were able to comfort, respond, pray, help, bring compassion, hold people, cry together, be there for those in extreme need. WOW does not even begin to relay what this month of not enough funds has brought; it has simply been incredible, and life changing for many. Do we believe God orchestrated a lack of funds? I am not sure. Do we believe he works in all things for the good of those who love him? YES, YES, YES.

Jigsaw literacy school and education sponsorship: back to school

Jigsaw's literacy ministry has restarted fully face to face: praise God. The literacy school in Area 4 is a light shining in the darkness. Lack of literacy is one of the biggest problems in urban Manila. The school runs four literacy programmes ranging from young beginners through to older children who have never learned to read and write. There are also evening classes for adults who can't read and write.

School is back on in the Philippines face to face and in August Jigsaw's sponsorship children had their most exciting day of the year, going to buy their new school uniform, PE kits, bags and school supplies. For many of the children, this is the first time they have ever had new shoes, bags or school books. Praise God so many are going to school through Jigsaw.

Prayers:

- ▶ Please pray for Jigsaw, for enough funding, resourcing, and staffing to meet the demands of growing numbers of children and families in extreme poverty in metro Manila. Pray that Jigsaw will be able to respond to all the children and families in need in the areas where they minister.
- ▶ Please pray for Tim, Jeannette, Jenalyn and Juvy as they spend the next three months reviewing Jigsaw programmes and ministry, for God's guidance and wisdom as they prepare Jigsaw for the year ahead.
- ▶ Please pray for our family, for safekeeping for James at university, Rebekah in Germany, Grace at sixth, for Tim in his work with Jigsaw and me in my teaching.

Kate and Tim



Photos from top to bottom: One of many home visits during Jigsaw's visiting month; girls practising their writing skills; new shoes for school, made possible through Jigsaw's education sponsorship



Going further with Church Mission Society

Pioneer Mission Leadership Training at CMS, designed by pioneers for pioneers, equips students for transformational mission in a dynamic and supportive learning community. Find out more at pioneer.churchmissionsociety.org

Please note that opinions expressed in link letters are those of mission partners, not necessarily of Church Mission Society.

If you would like to discuss your mailings with us or to receive this link letter on a regular basis, please email supporter.care@churchmissionsociety.org or call 01865 787400. Church Mission Society is a mission community acknowledged by the Church of England. Registered Company No. 6985330 and Registered Charity No. 1131655 (England and Wales) and SC047163 (Scotland).