



**Jesus never gives up.  
Neither should we.**



**Alastair Bateman,**  
CEO of Church  
Mission Society

This message has been at the heart of our communications since January 2023, but as I reflect on the 2022–23 financial year, I am struck by how it sums up the ways in which CMS people in mission followed Jesus to the edges. It is an honour to partner with so many inspired and inspiring people as we seek to see our world made new by the love of God.

And I want to thank our faithful supporters for being a part of that story, through giving, prayer or participation in God's mission with us.

It is a joy to share some snapshots of how CMS has seen God at work at the edges around the world. From CMS partners in the Middle East and North Africa addressing some of the challenges facing seekers and believers in Jesus from a Muslim background, to those serving and walking with indigenous groups on the margins in Latin America, CMS people in mission are sharing the love of God with those on the edges.

We continue to be deeply grateful to God and to our supporters, without whom none of the activity you read about would be possible. Thank you!

This leaflet offers a summary and extracts covering the financial year 2022–23.

To see the full audited accounts, go to [churchmissionsociety.org/annualreport](https://churchmissionsociety.org/annualreport)



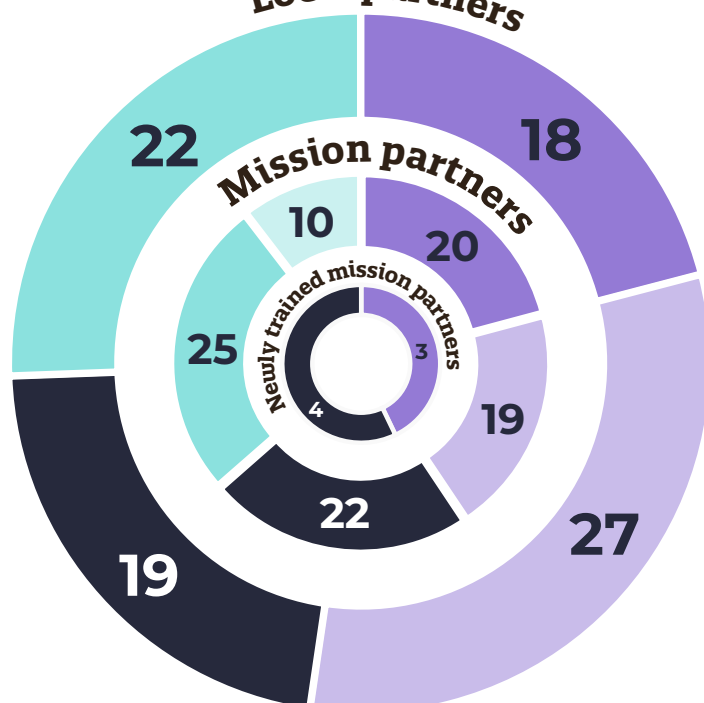
## The 2023–2023 financial year in review

# Mission at the edges

Here are some glimpses of what your prayers and gifts made possible.

**96 mission partners and 86 local partners across 37 countries**

in Africa, Asia, Europe, the Middle East and North Africa, and Latin America



### UKRAINE



"Having lived through months of war, I know that God is my provider, my protector and our healer," says mission partner Alison Giblett. When Russia invaded Ukraine in February 2022, Alison decided to stay. Initially, she and members of her church community left Kyiv for safety, staying in different places. When the Kyiv region was de-occupied, the group returned to help with reconstruction: clearing rubble, talking to people and listening to their stories, letting people know they weren't forgotten. The team also provided food parcels and medicine, organised camps for children, helped build a bomb shelter and travelled into other de-occupied areas to help more people.

### BRITAIN



Steve felt he'd reached the end of the road, and prayed a desperate prayer. Then he met CMS-trained pioneer minister Rev Ali Middleton outside Rotherham Minster. Through Ali, he got connected to a social supermarket, where he got help with food and housing. And he started exploring the Bible with a group of others who had questions about faith...

Steve comments, "Jesus has made a big difference to my life... God has never turned his back on me."

### ASIA-CMS



In 2022, the Asian-led mission movement and sister organisation of CMS marked 10 years of connecting, collaborating and catalysing mission in Asia. Asia-CMS is committed to engaging the world's least-reached people groups in culturally relevant and contextually appropriate ways.

A local partner comments: "It is a privilege to be a part of an organisation that aims to make disciples, spread the good news of Jesus, and... to walk alongside those who have a heart for God's mission."

### EUROPE

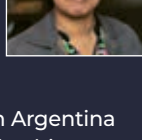
### MIDDLE EAST

### ASIA

### AFRICA

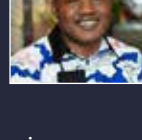
### LATIN AMERICA

### ARGENTINA



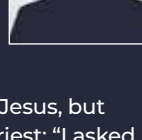
Mirna Paulo is a young Wichí woman from northern Argentina who stepped into leadership from a young age, discovering a passion for supporting women and young people. Mirna also works with other CMS local partners, mission partners and Latin America manager Paul Tester to develop longstanding ministry with indigenous groups. On being part of the CMS team, Mirna comments, "They are part of my family in Christ. I have great hope that this ministry will continue to grow with the indigenous peoples for Christ."

### AFRICA



CMS-Africa have been developing work to make disciples in areas affected by conflict, particularly in DR Congo and South Sudan. Despite logistical challenges, consultations have been held in both countries. The consultation process is important – listening to voices from the edges. As CMS manager in Africa Joan Busolo comments, "When I listen, I understand and communicate better. I hear the silence, the unsaid words, the emotions; this is crucial to my partnerships..."

### MIDDLE EAST



Adam (name changed) in Bahrain started searching for Jesus, but was sent away by a priest: "I asked God, 'If Jesus is the truth, please send a sign or send someone for me.'" One of Adam's friends told him about someone online who could help him. Adam began to read the Bible. "I learned about Jesus from reading the Bible and from talking about my questions." Adam participated in training with a CMS partner organisation and shared, "I'm doing the training because the thing I love the most is to help new people to know God."

## CMS Pioneer Mission Training

Pioneer Mission Training has continued to thrive, with students participating in training in Oxford, joining hubs across the UK and accessing courses online from Ghana, Kenya, the Netherlands, Tanzania, Uganda and the USA, as well as across the UK – from Glasgow to Cornwall and Newcastle to Norfolk, and many places in between!

- ▶ Bath
- ▶ Bradford
- ▶ Berkshire
- ▶ Buckinghamshire
- ▶ Cornwall
- ▶ Derby
- ▶ Glasgow
- ▶ Greater Manchester
- ▶ Hampshire
- ▶ Hertfordshire
- ▶ Leicestershire
- ▶ London
- ▶ Newcastle upon Tyne
- ▶ Norfolk
- ▶ Northamptonshire
- ▶ Oxford
- ▶ Somerset
- ▶ Staffordshire
- ▶ Surrey
- ▶ West Midlands
- ▶ Wiltshire

Both current students and pioneer graduates continue to put their training into practice in pioneering mission work in their local communities.

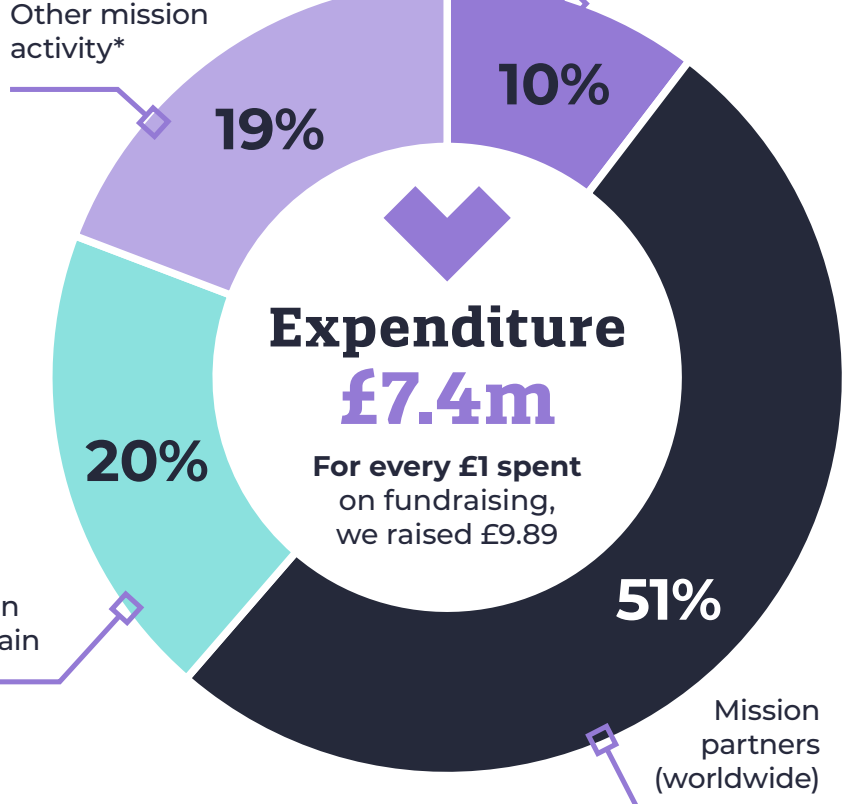
**75 students** are participating in training based in Oxford in the 2022–23 academic year, joining either in person or online.

## Thank you!

**We are so grateful that you have chosen to support Church Mission Society.**

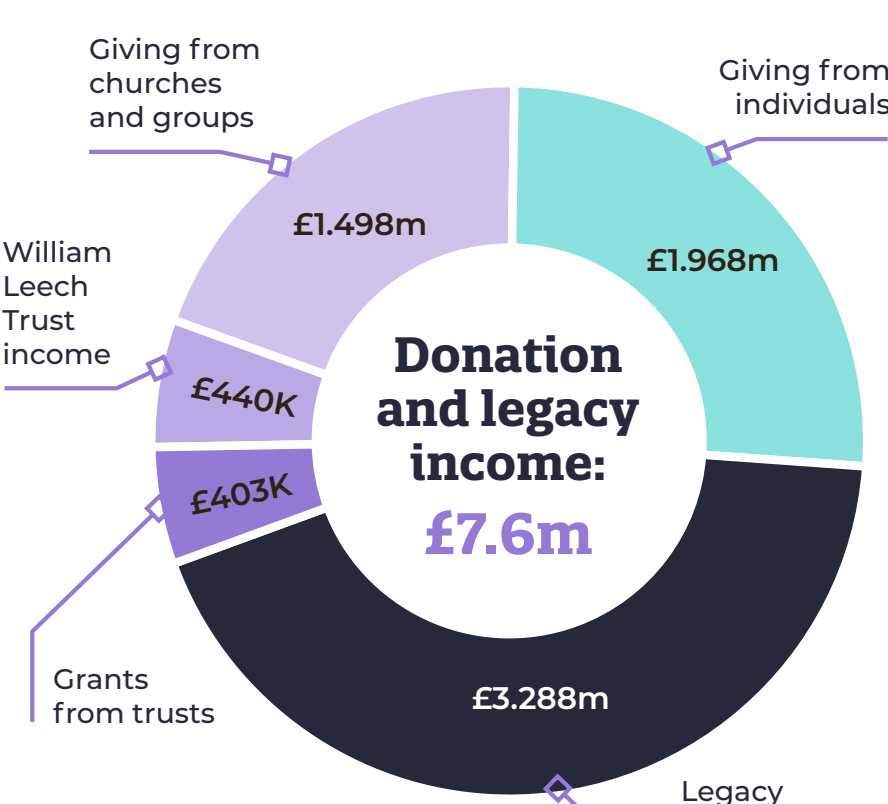
Your gifts have made it possible for CMS people in mission in the UK and around the world to show people that Jesus hasn't given up on them.

\*Other mission activity includes grants to CMS-Africa and Asia-CMS, and CMS's local partner programme.



**Expenditure £7.4m**

For every £1 spent on fundraising, we raised £9.89



**Donation and legacy income: £7.6m**

**Thank you...**

for partnering with us during the financial year 2022–23. We couldn't do all that we do without our amazing supporters.



Church Mission Society,  
Watlington Road, Oxford, OX4 6BZ

+44 (0)1865 787400  
[info@churchmissionsociety.org](mailto:info@churchmissionsociety.org)

This year, we saw a particularly large gift increase our legacy income. Legacies are a vital source of funds for CMS, and we are deeply grateful to all who generously leave a gift to CMS in their will.

In addition to donations and legacies, CMS received income from investments and from charitable and trading activities.

For more detail please see full audited accounts at

[churchmissionsociety.org/annualreport](https://churchmissionsociety.org/annualreport)

Church Mission Society is a mission community acknowledged by the Church of England, Registered Company No. 6985330 and Registered Charity No. 1131655 (England and Wales) and SC047163 (Scotland). Also part of CMS: The South American Mission Society, Registered Company No. 65048 and Registered Charity No. 221328 (England and Wales); The Church Mission Society Trust, Registered Charity No. 1131655-1 (previously 220297). Registered and principal offices of all above entities: Watlington Road, Oxford, OX4 6BZ.

**With Jesus  
With each other  
To the edges**